

Green Contractor Award 2021



**Design and Construction of A Community Health Centre cum
Social Welfare Facilities at Pak Wo Road, North District
Contract no. : SS H501**



有利建築有限公司
Yau Lee Construction Co., Ltd.



建築署
Architectural Services Department

Copyright © Yau Lee Holdings Limited. All rights reserved.
Please do not copy and circulate without permission.

Introduction



Starting Date	13 Aug 2020
Original Completion Date	9 Jul 2023
Contract Period	1060 days
Changed Completion Date (Granted EOT until April, 2022)	14/10/2023 (+82 working days)
Day lapsed	64.35% (742 days)
Average number of workers	About 189

Project Scope:

- Demolition of existing 2-storey school building comprising structures and associated building services including abatement and removal of asbestos containing materials;
- Design and construction of a 10-storey community health centre and social welfare facility building (to be operated by **Hospital Authority HA, Department of Health (DH) and Social Welfare Department (SWD)**), including interior fitting work, BS services, external wall system and external landscape works

1.0 Care of Environment

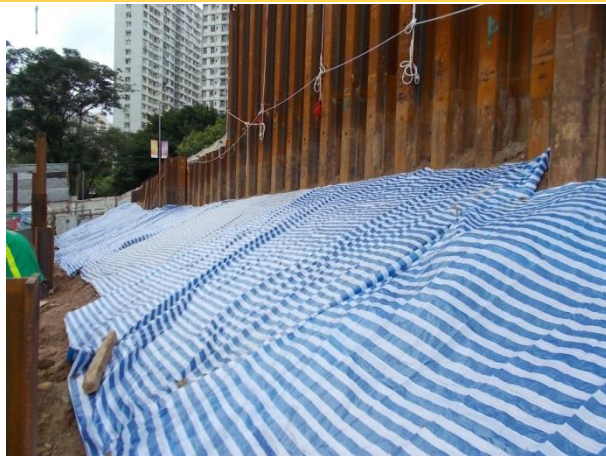


1.0 Care of Environment

Air Pollution Control



Install dust suppression sprinkler on top of hoarding



Coverage of slope



Dust suppression during breaking works



1.0 Care of Environment

Noisie Pollution Control



SilentUP®
Retractable Noise Barrier

Product Description:
SilentUP® is a retractable noise barrier for construction sites and urban areas. It is made of high-quality materials and is easy to install and remove. It can be used for various construction activities such as roadworks, drilling, piling, excavating, and demolition. The barrier is made of high-quality materials and is easy to install and remove. It can be used for various construction activities such as roadworks, drilling, piling, excavating, and demolition.

Key Features:

- 70% STC
- Modular design
- Easy to install and remove
- Reusable and durable
- Available in various colors
- Can be used for various construction activities

Technical Information:
STC: 18, 24
Insertion Loss: 22 dB(A), 27 dB(A)
Modular Weight: 5kg, 8kg
Maximum Height: 7m, 5m
Modular Size: 1m(H) x 1.35m(W)
Standard Colour: Grey
Panel Thickness: 100mm on edges

Client Feedback:
"The product has been widely used in Hong Kong and is suitable for the urban environment." - Mr. [Name]

Product Specifications:
Material: Galvanized Steel, Aluminum
Color: Grey, Green, Blue, Red, Yellow
Modular Size: 1m(H) x 1.35m(W)
Modular Weight: 5kg, 8kg
Maximum Height: 7m, 5m
Standard Colour: Grey
Panel Thickness: 100mm on edges

Technical Information:
STC: 18, 24
Insertion Loss: 22 dB(A), 27 dB(A)
Modular Weight: 5kg, 8kg
Maximum Height: 7m, 5m
Modular Size: 1m(H) x 1.35m(W)
Standard Colour: Grey
Panel Thickness: 100mm on edges

Client Feedback:
"The product has been widely used in Hong Kong and is suitable for the urban environment." - Mr. [Name]

Product Specifications:
Material: Galvanized Steel, Aluminum
Color: Grey, Green, Blue, Red, Yellow
Modular Size: 1m(H) x 1.35m(W)
Modular Weight: 5kg, 8kg
Maximum Height: 7m, 5m
Standard Colour: Grey
Panel Thickness: 100mm on edges

Technical Information:
STC: 18, 24
Insertion Loss: 22 dB(A), 27 dB(A)
Modular Weight: 5kg, 8kg
Maximum Height: 7m, 5m
Modular Size: 1m(H) x 1.35m(W)
Standard Colour: Grey
Panel Thickness: 100mm on edges

Client Feedback:
"The product has been widely used in Hong Kong and is suitable for the urban environment." - Mr. [Name]

Product Specification

STC	18	24
Insertion Loss*	22 dB(A)	27 dB(A)
Modular Weight	5kg	8kg
Maximum Height	7m	5m
Modular Size	1m(H) x 1.35m(W)	
Standard Colour	Grey	
Panel Thickness	100mm on edges	

Can effectively reduce noise by 27 dB(A)

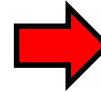


Adopting Silent Up noise barrier (stc24)

Easy to assemble

1.0 Care of Environment

Collect discarded wooden pallets and recycled plastic bottles to create green wall plinths

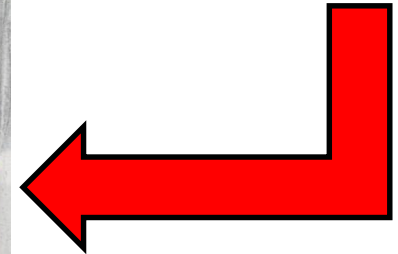


Plant Boston ferns in a pot with plastic bottles

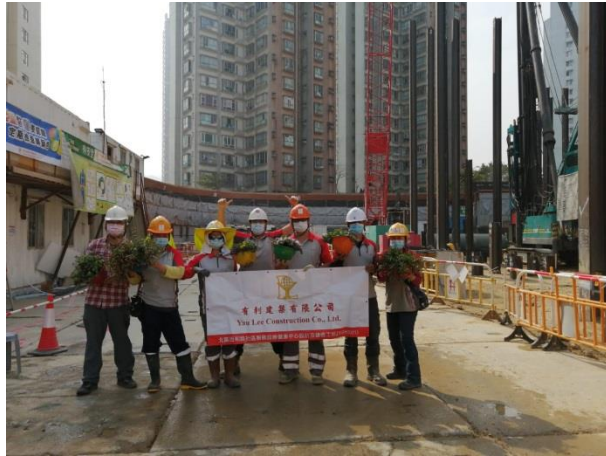


The completed green wall has been installed on the container

To enhance the environmental awareness and greening effect of the site staff.



1.0 Care of Environment



*Use expired safety helmets as flower pots,
Reducing waste and greening sites reduces stress for workers.*



1.0 Care of Environment



Strengthen the mosquito control by fogging operation every day



Weekly mosquito control



Install mosquito traps on site

1.0 Care of Environment



Arrangement: materials are sorted and placed in an orderly manner



Cleanliness: Maintain cleanliness inside and outside the site



Cleaning: Set up a cleaning team, carrying out daily cleaning



Self-cultivation: Hang a large number of banners on the fenced streets to strengthen workers' safety awareness and culture



Rectification: each material in the machine room / warehouse is clearly marked

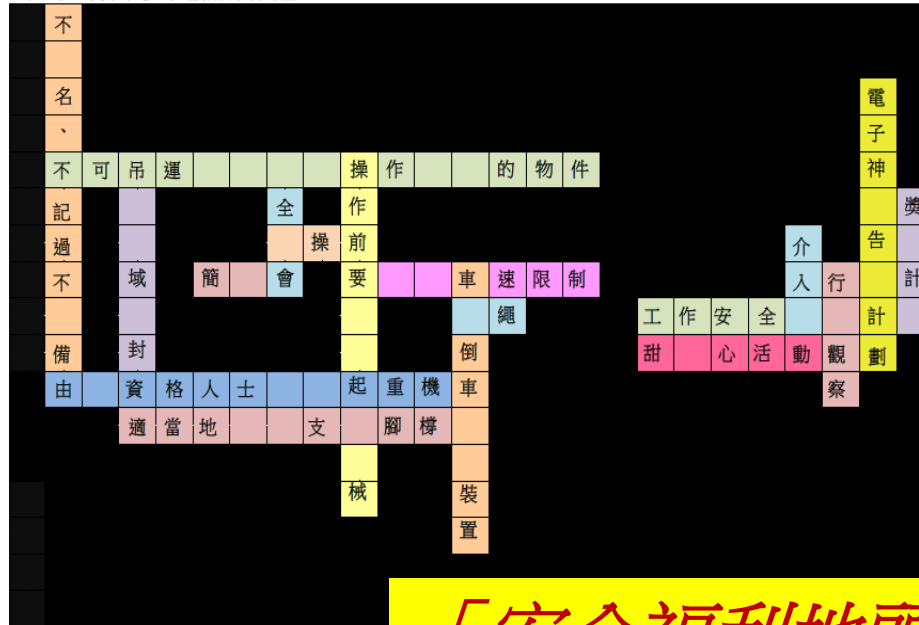
2.0 Employee Well-Being and Benefits – Enhanced Expression to Workers



2.0 Employee Well-Being and Benefits – Enhanced Expression to Workers

Promotion in different forms within the site

百和路社區健康中心暨社會福利設施地盤



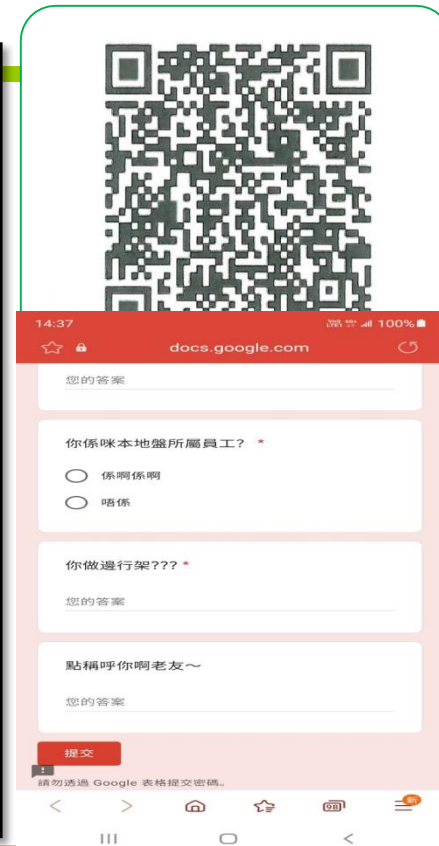
「安全福利地頭龍」活動

- After providing workers with safety or welfare measures, in order to enhance the publicity effect, We will distribute the "Safety and Welfare Solitaire Form" to the workers
- There are solitaire games with relevant measures inside for workers to compete to strengthen everyone's sense of belonging

2.0 Employee Well-Being and Benefits – Enhanced Expression to Workers

Strengthen communication with workers

「電子神父告解計劃」



- We combined reporting culture with I.T. technology and developed "Electronic Priest "
- Workers can use their mobile phones to scan the QR code of the "Electronic Priest"
- Whether anonymous or not, you can write any comments about safety to the "electronic priest" in your mobile phone
- Our management will follow up and improve in a timely manner according to the message of "Electronic Priest".

2.0 Employee Well-Being and Benefits – Enhanced Expression to Workers

「安全龍門陣」和「平行式」管理



安全龍門陣



「平行式」文化

- 「安全龍門陣」 are regular discussions on hot topics in security.
- On the recent topic of lifting materials, various industry representatives, management and workers were convened to discuss.
- Everyone discussed in an atmosphere of mutual learning, so that they could deal with problems more accurately.

2.0 Employee Well-Being and Benefits – Enhanced Expression to Workers

「安全意識增幅機」



英文名稱	中文名稱	職員類型	安全意識增幅機紀錄 (4-2021 至 7-2021)	公司	Safety Card			
			出生日期	性別	電話號碼	考試狀態		
Mok Nga Ho, Ryan		Normal Worker	N/A	M	95252602	有效	Arcadis HSKF Construction Engineering Limited	Card No: HRM00216469, Expiry Date: 15/01/2020, 有效 Card No: HRKTD120584R, Expiry Date: 27/09/2023, 有效
Chow Kam Hong	周錦興	Normal Worker	02/11/1994	M	51084600	有效	Kin On (HongKong) Construction Engineering Limited	Card No: HRTW0133460R, Expiry Date: 06/12/2023, 有效 Card No: HRTW0136630R, Expiry Date: 08/12/2020, 有效
Chan Kin On	陳建安	Normal Worker	20/05/1972	M	91266330	有效	Kin On (HongKong) Construction Engineering Limited	Card No: HRTW0136630R, Expiry Date: 2/11/2023, 有效 Card No: HRTW0136630R, Expiry Date: 2/11/2023, 有效
Chan Wan Man	陳雲敏	Normal Worker	06/11/1969	F	98429253	有效	Kin On (HongKong) Construction Engineering Limited	Card No: HRTW0159000, Expiry Date: 01/02/2022, 有效
Chan Lau Tai	陳達達	Normal Worker	18/01/1953	M	94352667	有效	Wai Wab Construction Engineering Co., Ltd	Card No: HRYL0547323R, Expiry Date: 30/05/2024, 有效
Choi Chuk Chuen	蔡卓泉	Normal Worker	04/08/1988	M	55921832	有效	Wai Wab Construction Engineering Co., Ltd	Card No: HRKTD18861R, Expiry Date: 02/06/2022, 有效
So Fat Sam	蘇發森	Normal Worker	20/05/1992	M	66048003	有效	Wai Wab Construction Engineering Co., Ltd	Card No: CRC-100031R, Expiry Date: 16/09/2021, 有效
Lau Yik Ting	劉熾廷	Normal Worker	31/03/1988	M	66411132	有效	Wai Wab Construction Engineering Co., Ltd	

- Workers register by tapping the card and start self-study. After answering the questions correctly, the information of the participating workers will be recorded through the I.T. channel, and the management/security department will also receive a summary list of the trained workers

- The company will send gifts to the participating workers to encourage workers to take the initiative to enhance their safety awareness

3.0 Fair and caring for workers



3.0 Fair and caring for workers

「仁愛地盤計劃」



- We are fortunate to invite the non-profit organization Yan Oi Tong to cooperate with their mobile TCM cart
- Register Chinese medicine practitioners to assess the health of the workers and provide them with a suitable diet therapy direction, so as to strengthen the physical fitness of the workers

3.0 Fair and caring for workers

「甜在心」活動



- To remind workers to prevent heart and cerebrovascular diseases, we often cooperate with the police dormitory canteen next to the site
- Regularly hold "Sweet Heart" activities, invite the cafeteria to cook special low-sugar desserts and share them with employees

3.0 Fair and caring for workers

防中暑活動:生果共享、生果金計劃



- Using a specially designed mobile - express train for cooling off the summer heat, the fruits that are beneficial and can cool off the summer heat are distributed to workers in different locations for free.
- Reduced the frequent drinking of canned beverages that are generally too sweet for workers, enhancing the health of workers and enhancing the integrated safety culture

「戒煙計劃」



Implement a smoking cessation program, all employees who successfully quit smoking will receive a tablet

3.0 Fair and caring for workers

定期舉辦「友誼球賽」



- Often organize friendly ball games for employees of all levels
- Regardless of ethnicity, different employees can participate
- Enhance employees' sense of belonging and promote physical health and emotional well-being.

3.0 Fair and caring for workers

與職安局聯合舉辦「大笑瑜伽」活動



- *All employees are encouraged to participate*
- *In addition to reducing work pressure, it also makes employees more harmonious, strengthens everyone's cooperation and safety and health culture*

3.0 Fair and caring for workers

We hold daily and weekly review meetings, and monthly site safety committees to assess the effectiveness of worker welfare measures.

‘以人為本，用心建設’



We Build We Serve We Create

Green Integrated Corporation

Think Green, Practice Green, Act Green
Aim to provide a green living to our society & the world

Thank You

